

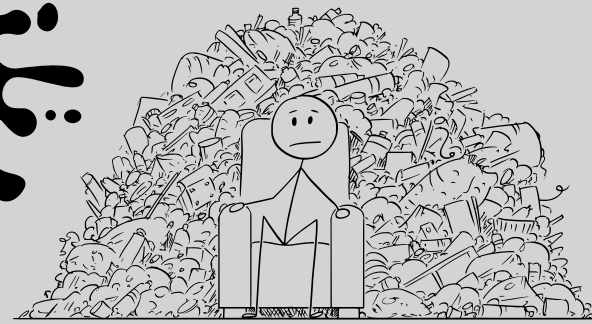
# SAGRE E FIERE



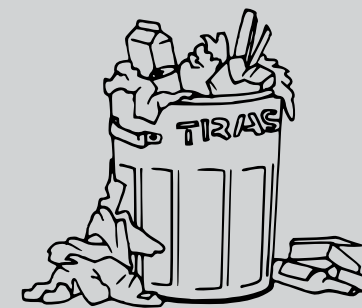




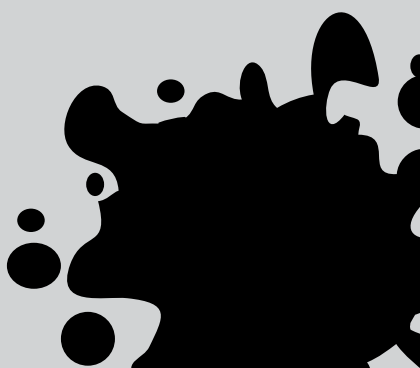
**Gli aspetti  
negativi delle  
sagre che  
non tutti sanno**




**RIFIUTI  
PER STRADA**



**SPRECO  
DI CIBO**







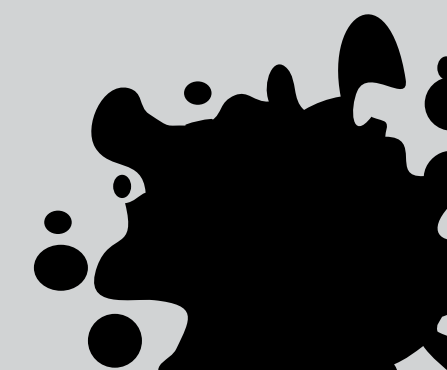
**Gli aspetti  
negativi delle  
sagre che  
non tutti sanno**



**SPRECO DI  
CARTA**



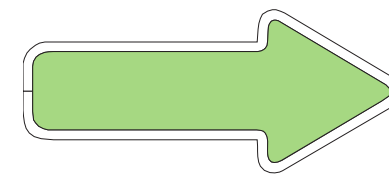
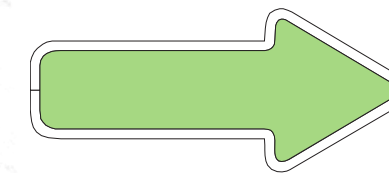
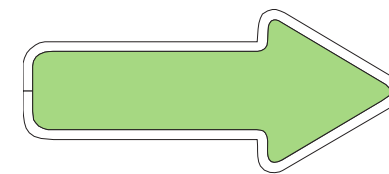
**SPRECO DI  
PLASTICA**







**Come possiamo  
rendere  
green una fiera?**



**NON UTILIZZARE  
PLASTICA E MATERIALI  
USA E GETTA**



**CONTENITORI PER LA  
DIFFERENZIATA**



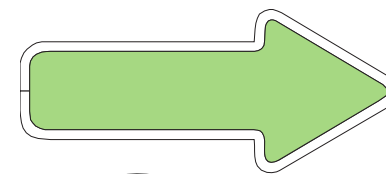
**PRESENZA DI ZONA SPECIFICA  
PER IL LAVAGGIO DI  
STOVIGLIE SPORCHE**



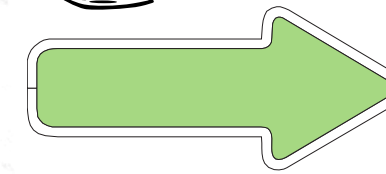




**Come possiamo  
rendere  
green una fiera ?**

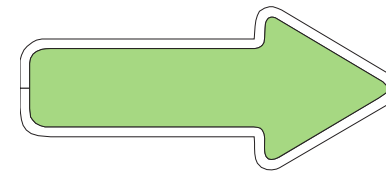


**DICHIARAZIONE DEI TEMPI  
DI SMALTIMENTO DEI  
RIFIUTI ALIMENTARI**

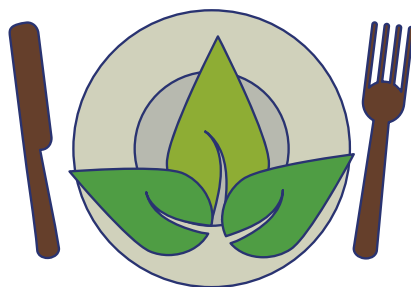
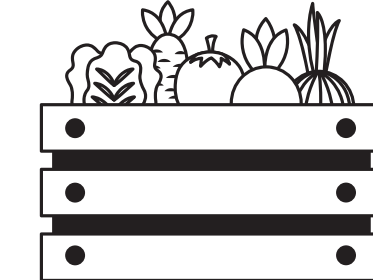


**UTILIZZO DI ALIMENTI A  
KILOMETRO 0**

**FOOOD!!!**



**PRESENZA DI STOVIGLIOTECA  
LOCALE GESTITA DA  
ASSOCIAZIONI**





A terrarium globe containing a small, lush green tree and a layer of soil. The glass surface of the globe is cracked and broken, with white, web-like material visible along the cracks. The globe is set against a background of blurred green foliage and warm, golden light.

GRAZIE PER LA VOSTRA ATTENZIONE

**Lavoro svolto da Paola Gagliani, Nicole Morandi, Giada Vallarini, Giulia Vecchio, Stefano Fergola.**